



HAZARDOUS LOCATIONS CLASS I,
DIV. 1, GROUPS C AND D



CE 0539 Ex II 2 G
EEx d IIB T6
05 ATEX 140087 (*)

(*) Certificato non ancora aggiornato secondo l'ultima
revisione della normativa di riferimento.
(*) This certificate is not yet referring to the latest standard

CARATTERISTICHE MECCANICHE - MECHANICAL SPECIFICATIONS

Dimensioni - Dimensions: vedi disegni - see drawings
Albero - Shaft: acciaio inox - stainless steel
Carico sull'albero - Shaft loading: assiale - axial: 25 N; radiale - radial 25 N
Numero giri - Shaft rotational speed: 10.000 RPM per brevi periodi - to short cycle time; 6.000 RPM continui - continuous;
Vita dei cuscinetti - Bearings life: 5 x 10⁶ giri (minimo) - rev. min.
Peso - Weight: ~ 0,9 kg Assiale - Axial; 1,1 Kg Radiale - Radial

CARATTERISTICHE ELETTRICHE - ELECTRICAL SPECIFICATIONS

Frequenza in uscita - output frequency: fino a 300 kHz up to 300 kHz
Sincronismo di zero - Synchronous index output: Su A - B - A&B secondo i modelli - on A - B - A&B in according to types
Absorbimento in corrente - Supply current without load: 150 mA max.
Protezione - Protection: contro il cortocircuito (solo elettronica LD2 e PP2); short circuit protection, no limit duration (only output LD2 and PP2)
 contro inversione di polarità (escluso 5V e 5/30V); against inversion of polarity (except 5V and 5/30V)

MATERIALI UTILIZZATI - MATERIALS

Corpo - Flange: in alluminio anticorrosivo - aluminium non corroding
Custodia - Housing: in alluminio anticorrosivo - aluminium non corroding

CARATTERISTICHE AMBIENTALI - ENVIRONMENTAL SPECIFICATIONS

Temperatura di lavoro - Operating temperature range: -20°C + +40°C
Temperatura di stoccaggio - Storage temperature range: -30°C + +85°C
Umidità relativa - Relative humidity: 98% RH senza condensazione - RH without condensing
Vibrazioni - Vibrations: 10 g (da 10 a 2.000 Hz) - (From 10 up to 2.000 Hz)
Schock - Schock: 20 g (per 11 ms) - (for 11 ms)

CODICE DI ORDINAZIONE - ORDERING CODE

TIEEX XXXX . XXX . XXXX . XXXXX . X . K4 . XX,XX . XXnn . XXX-XXXX . Xnnn

Custom

MONTAGGIO - ASSEMBLY

S senza molla; without anti-rotation spring
 M con molla; with anti-rotation spring

MODELLO - TYPE

TIEEX700W monodirezionale - unidirectional
 TIEEX701AW monodir+ zero su A - unidirect + index on A
 TIEEX702W bidirezionale - bidirectional
 TIEEX703AW bidirez.+ Zero su A - bidirectional+ index on A
 TIEEX703BW bidirez.+ Zero - su B - bidirectional + index on B
 TIEEX703ABW bidirez.+ Zero su A+B - bidirectional+ index on A+B

IMPULSI GIRO - PULSE RATE

2 - 5 - 10 - 20 - 25 - 30 - 32 - 36 - 40 - 50 - 60 - 64 - 72 - 80 - 88
 - 90 - 100 - 120 - 125 - 127 - 128 - 150 - 162 - 180 - 183 - 200 -
 240 - 250 - 254 - 256 - 300 - 314 - 360 - 375 - 390 - 400 - 500 -
 512 - 576 - 600 - 625 - 635 - 720 - 750 - 800 - 900 - 1000 -
 1024 - 1200 - 1250 - 1270 - 1440 - 1500 - 1800 - 2000 - 2048 -
 2500 - 2540 - 2700 - 3600 - 4096 - 5000 - 9000

Alimentazione (Vdc) - Voltage supply

5 +5V ±5 %
 11/30 +11V +30 V
 5/28 +5V +28V

Frequenza in uscita - Output frequency

S da - from 0 a - up to 100 kHz
 V da - from 0 a - up to 300 kHz

Grado di protezione - Protection class

K4 IP 64 (EN60529)

CIRCUITI DI USCITA - OUTPUT CIRCUITS

S NPN standard (resistenza di pull-up inclusa - resistor included)
 OC NPN open collector
 P PNP (resistenza di pull-down inclusa - resistor included)
 OP PNP open collector
 PP2-5 Push-Pull 5 V output
 PP2-1130 Push-Pull 11/30 Vcc output (solo con alimentazione 11/30 V)
 Push-Pull 5/28 Vcc output (only with voltage supply 11/30 V)
 PP2-528 Push-Pull 5/28 Vcc output (solo con alimentazione 5/28 V)
 Push-Pull 5/28 Vcc output (only with voltage supply 5/28 V)
 LD Line driver RS422 (26LS31) solo - only 5 V
 LD2-5 Line driver 5 Vcc output
 LD2-1130 Line driver 11/30 Vcc output (solo con alimentazione 11/30 V)
 Line driver 5/28 Vcc output (only with voltage supply 11/30 V)
 LD2-528 Line driver 5/28 Vcc output (solo con alimentazione 5/28 V)
 Line driver 5/28 Vcc output (only with voltage supply 5/28 V)

CONNESSIONI ELETTRICHE - ELECTRICAL CONNECTIONS

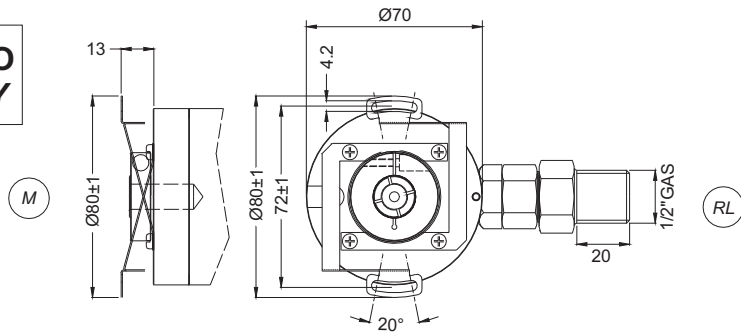
OUTPUT: S ; P ; OC ; OP ; PP2 ; LD ; LD2
RAnn raccordo 1/2" GAS maschio assiale con cavo da 1 a 6 m;
 on axial tap nipple 1/2" GAS with cable 1 + 6 m long
RLnn raccordo 1/2" GAS maschio radiale con cavo da 1 a 6 m;
 on radial tap nipple 1/2" GAS with cable 1 + 6 m long
GAnn raccordo 1/2" GAS femmina assiale con cavo da 1 a 6 m;
 on axial female nipple 1/2" GAS with cable 1 + 6 m long
GLnn raccordo 1/2" GAS femmina radiale con cavo da 1 a 6 m;
 on radial female nipple 1/2" GAS with cable 1 + 6 m long
nn Lunghezza cavo - Cable length (es. PL10 = 1 m. ... PL60 = 6 m)

Albero - Shaft

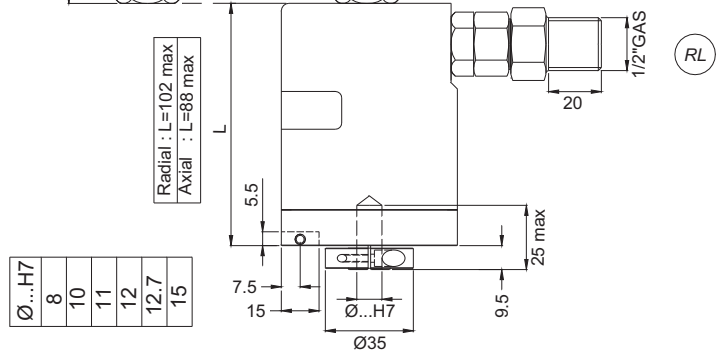
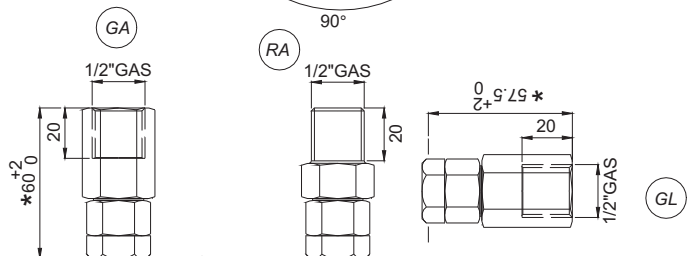
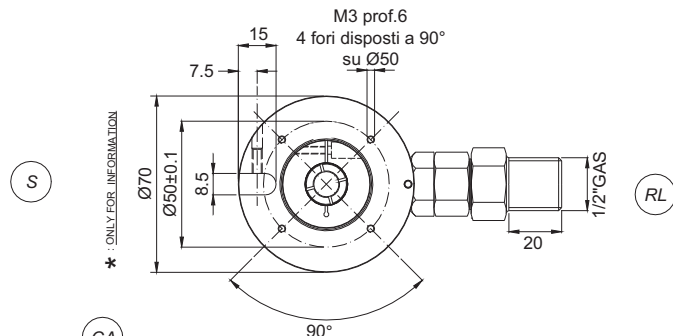
8	Ø 8 mm	12	Ø 12 mm
10	Ø 10 mm	12,7	Ø 12,7 mm
11	Ø 11 mm	15	Ø 15 mm

**MONTAGGIO MECCANICO
MECHANICAL ASSEMBLY**

M con molla antirotazione
with antirotation spring



S senza molla antirotazione
without antirotation spring



Radial : L=102 max
Axial : L=88 max

Ø...H7
8
10
11
12
12.7
15

Execution according to:

**ATEX CEI EN 60079-0/60079-1
UL1203
C22.2 N°. 30-M1986**

Certification code **EEx-d IIB T6** means:

- **EEx** : means that the device has been certified according to the ATEX and UL/CSA safety rules;
- **d** : flame proof case
- **II** : Device certified for operation in potentially explosive areas except the mines in which grisou gas is present; (hazardous locations)
- **B** : Suited for the use in environments containing gases/fumes of Ethylene,Propane
- **T6** : Maximum body surface temperature 85 °C as per EN5014.